

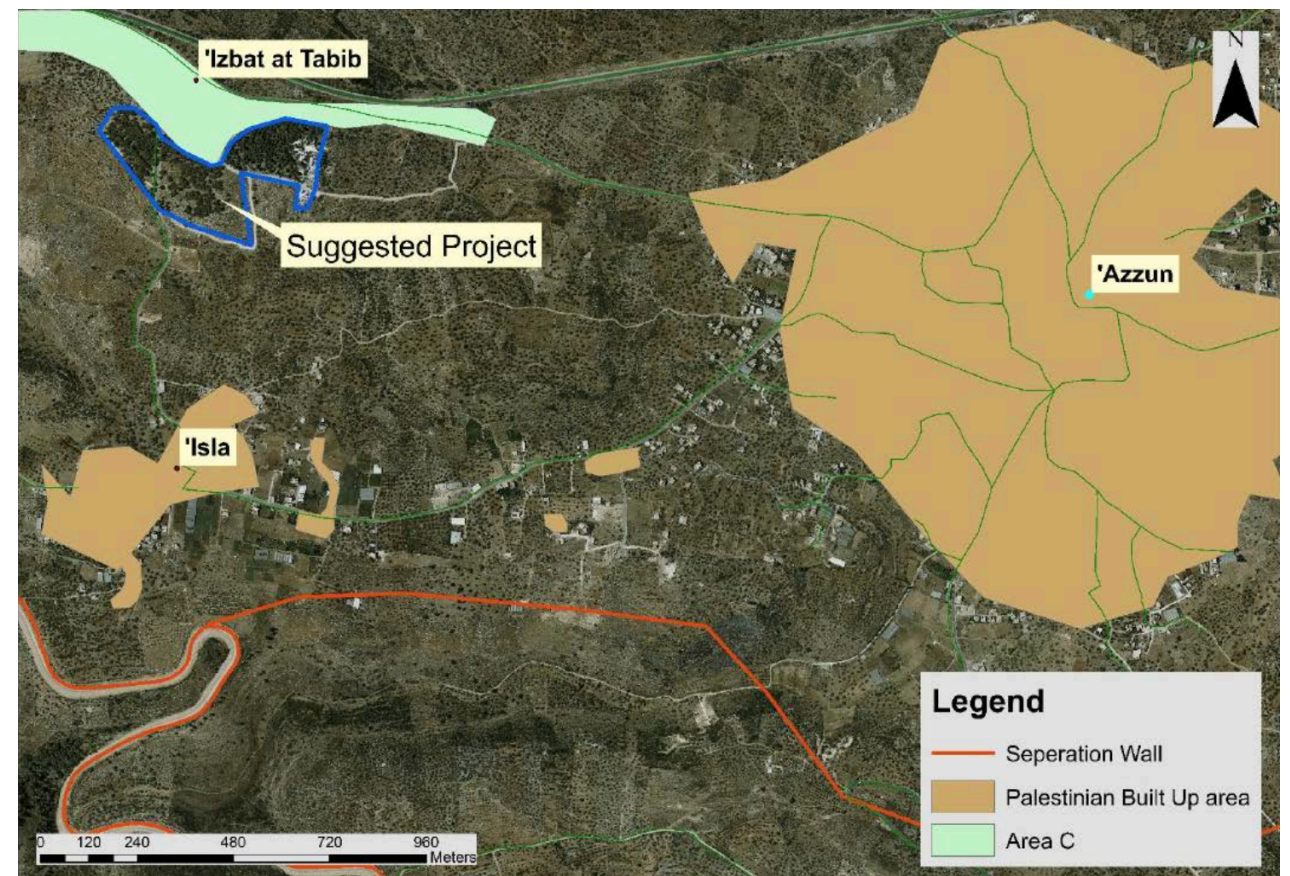
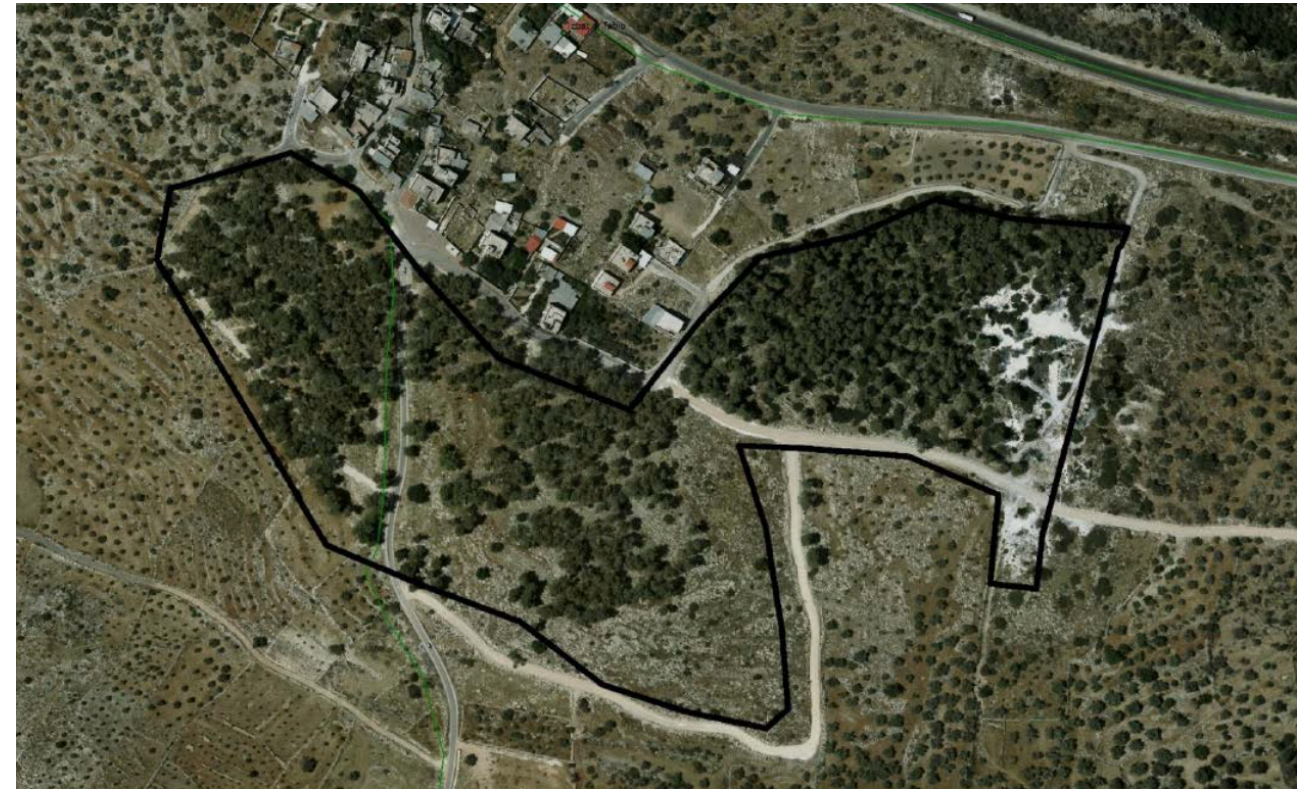
THE FIRST NATIONAL PARK IN AREA C IN THE WEST BANK

IZBIT AL-TABIB/ AZZOUN/ QALQILYA GOVERNORATE



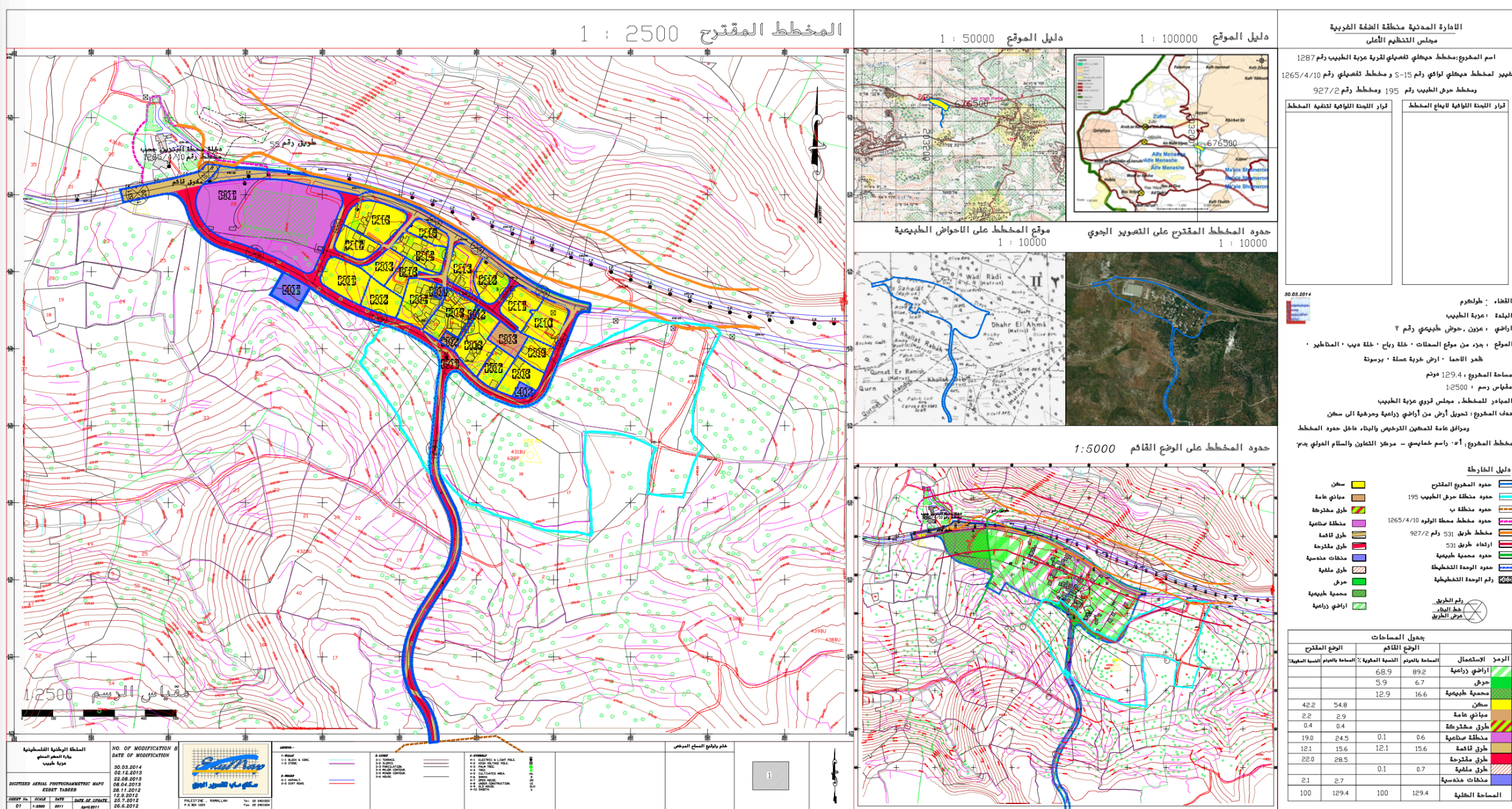
IZBIT AL-TABIB

Izbit al-Tabib village is located in area “C”, near the town of Azzun in the Qalqilya governorate, built in the 1920s. It contains 53 houses and has a population of 300 people. The village lost 45% of its land through confiscation to build the apartheid wall. The village includes an area of 120-donum called Horsh al-Tabib, planted with forest trees.



THE MASTER PLAN

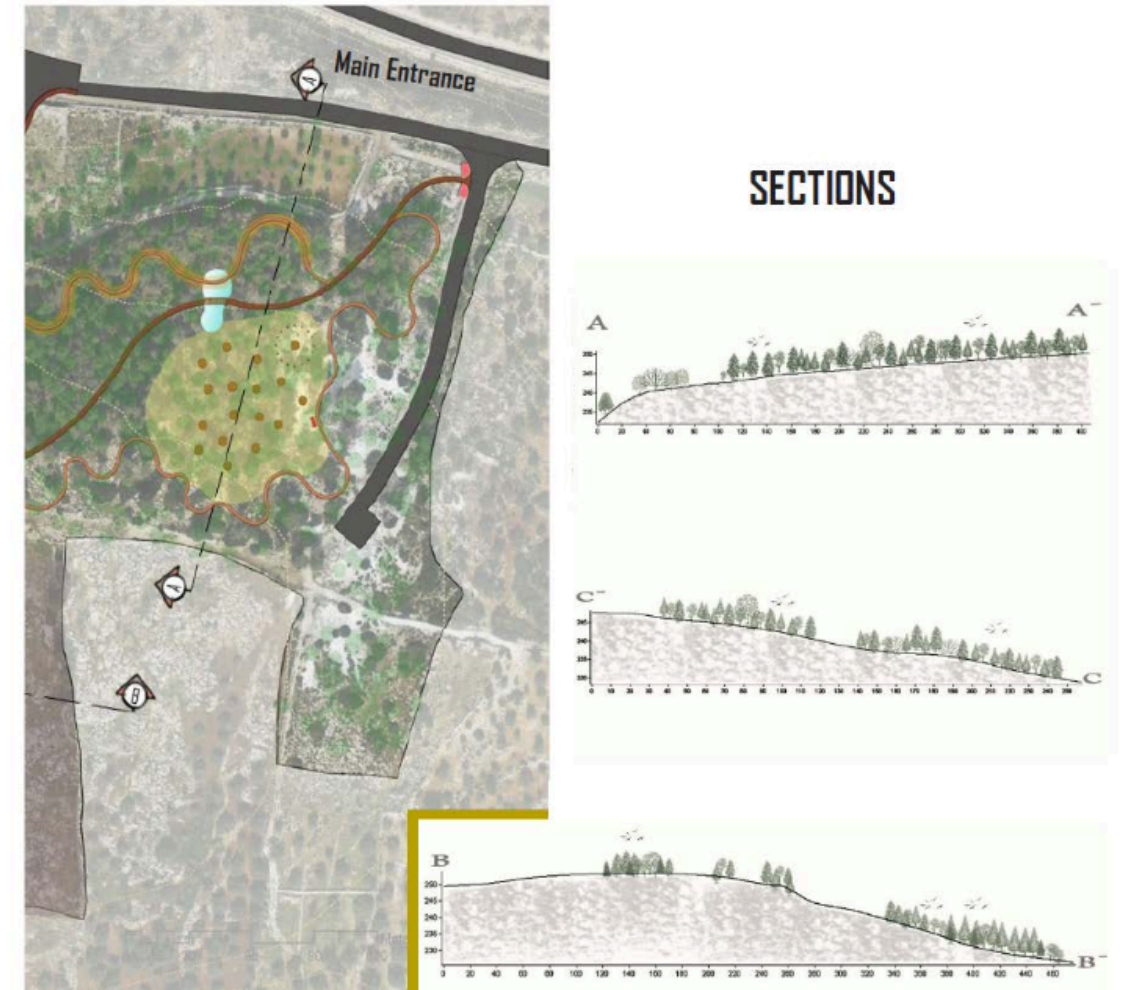
The International Center for Cooperation and Peace (IPCC), with the participation of the local community in the region, prepared a master plan, which was approved by the Israeli planning authorities in 2017. The development plan for the region included the development of about 120 dunams as a national park, the first in the West Bank.



PROJECT GOALS

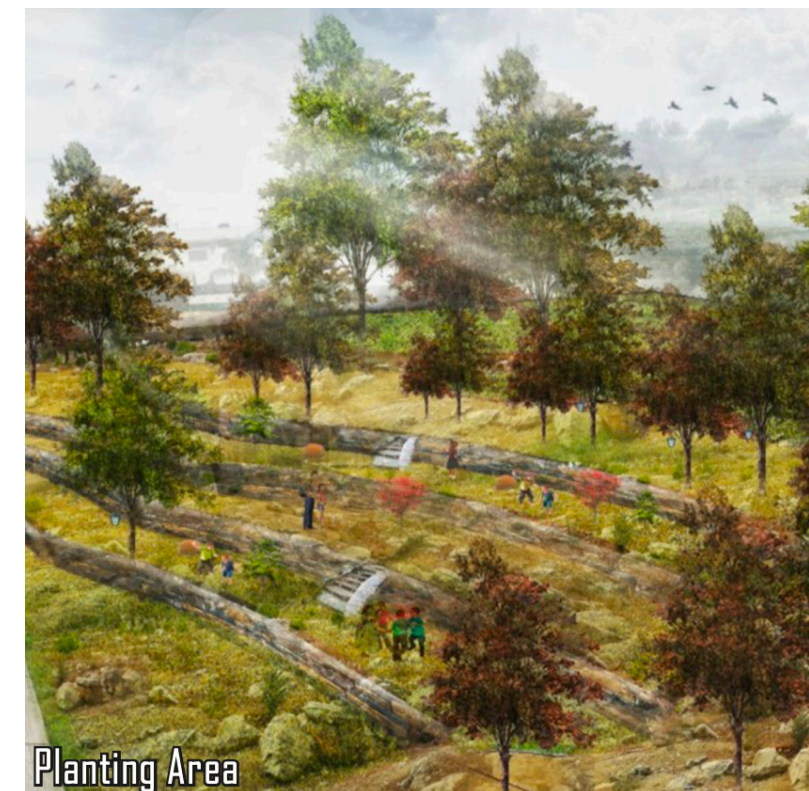
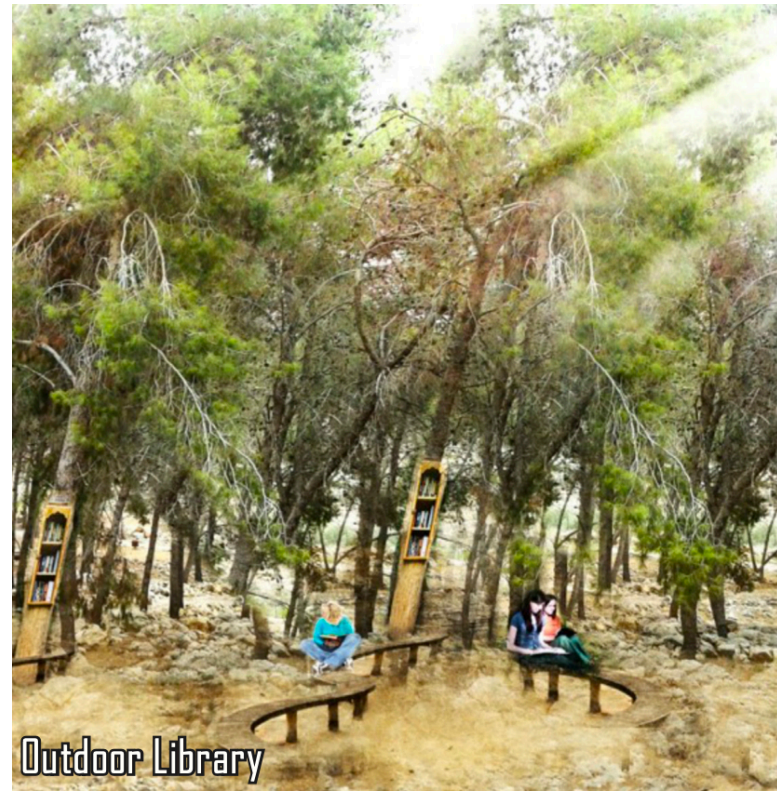
The project aims to protect the plot of land, prepare it and clean it, trim trees in preparation for the establishment of the first Palestinian national park, to be the first of its kind in Area C in the West Bank, that can be used to set up summer camps, in addition to many sports, cultural, artistic and educational activities.

The project will serve about 600,000 people, including children, women, youth, the elderly, and people with special needs, living in the northern governorates, Qalqilya, Nablus, Tulkarm, Salfit, Tubas, and Jenin, and as a picnic destination for our people from the 1948.

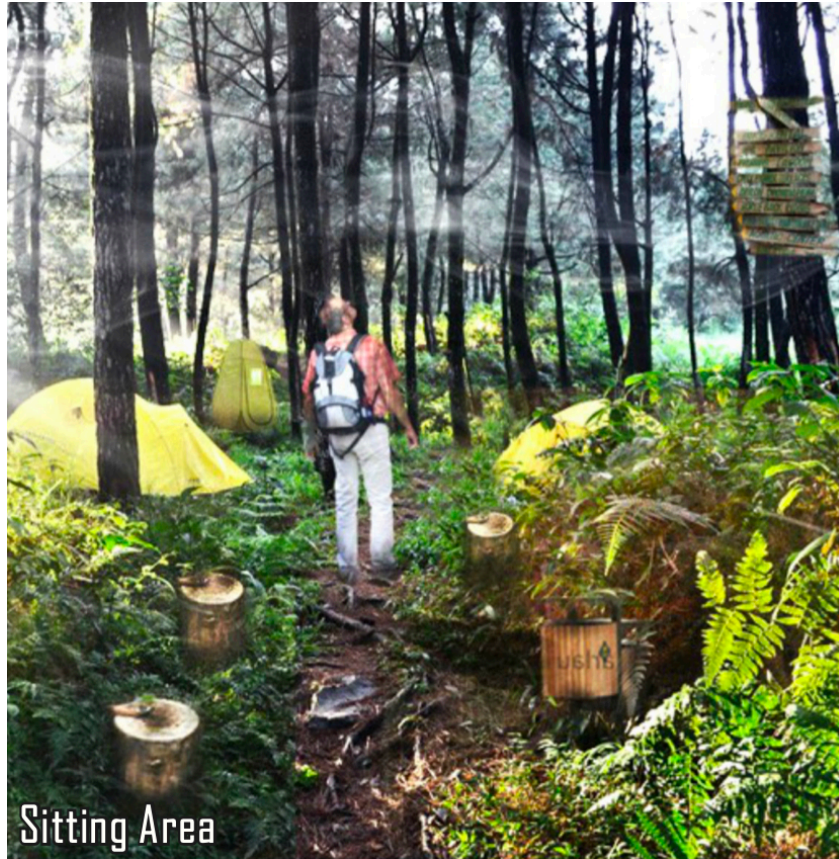


PROJECT ELEMENTS

- Preparing the necessary drawings and designs
- Supervising the cleaning of the plot.
- Tree numbering, pruning, care, and preservation
- Afforestation and gardening
- A public safety and fire prevention plan
- Establishment of a small multi-use playground
- Design and implementation of walking paths
- Design and implementation of seating and picnic areas.
- Preparing and equipping a children's play area
- Fitness equipment
- Challenging game equipment, wooden bridges, and ropes between trees
- Rehabilitation of a camping area to be used for summer camps
- Rehabilitation of a parking area
- An area of cafes, restaurants, and kiosks selling food and handicraft products.
- Public toilets
- Waste containers



PROJECT ELEMENTS



THE IMPORTANCE OF THE PROJECT

This vital and important national project will protect the plot of land in this threatened area located in Area C, develop the area, provide job opportunities for its residents, and serve as the first and largest national park in the West Bank that lacks such facilities. This park can be a model to be followed in other areas in the West Bank, where there are such forests in which national parks can be established, which contributes to protecting our land. This project will also serve as confirmation that the collective national effort will enable us to advance the services provided to our people, alleviating their suffering and supporting their steadfastness.



SUPERVISION AND IMPLEMENTATION

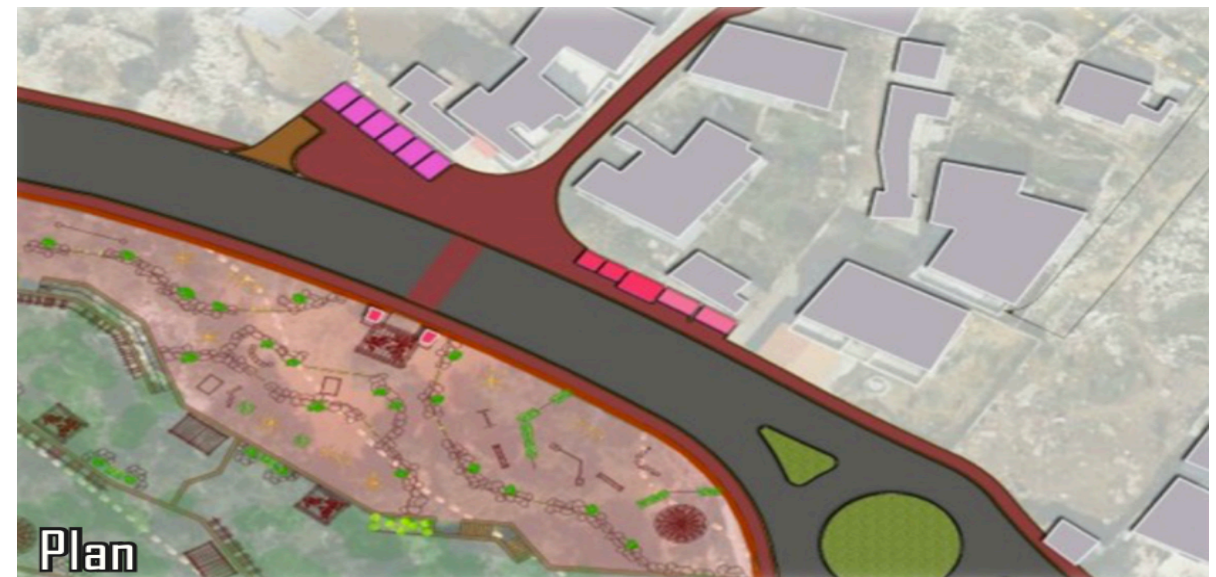
The Jerusalem Urban Research Institute (JURI) of An-Najah University and the International Center for Cooperation and Peace (IPCC) will prepare the necessary engineering plans and designs, supervising the cleaning of the plot, including numbering, pruning, caring, and preserving trees in cooperation with all concerned parties, and supervising the implementation of the establishment of the national park.



MAINTENANCE, CLEANING, AND GUARDING

The Municipality of Azzoun, has committed to supervising, following up, and operating the project after its implementation, and to contribute to its protection, maintenance, cleaning, guarding, and all that is necessary for its sustainability.

These costs can be covered by renting a café, restaurant, and kiosks, and through fees for some social activities, in addition to some nominal fees for some activities and events within the national park.



PROJECT COSTS AND MAINTENANCE

The estimated cost of the project is about \$800,000. A request has been submitted to the German Development Bank (KFW) to finance this project, and there are advanced contacts with them to secure half of the project costs. The Jerusalem Institute and the IPCC are working to secure the remaining half, at a value of \$400,000, from Palestinian donors in Palestine and abroad.

